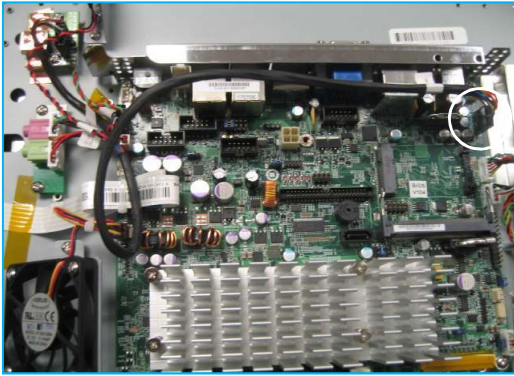
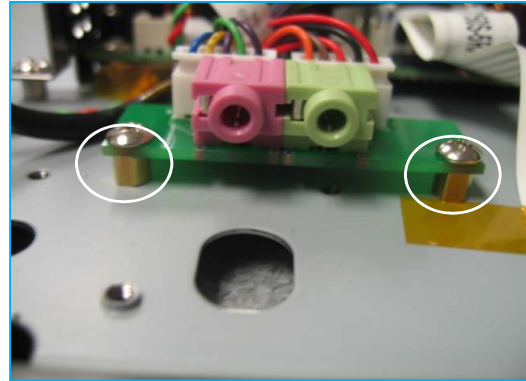


## Installation guide for 36-555B (Mic&Headphone jack)

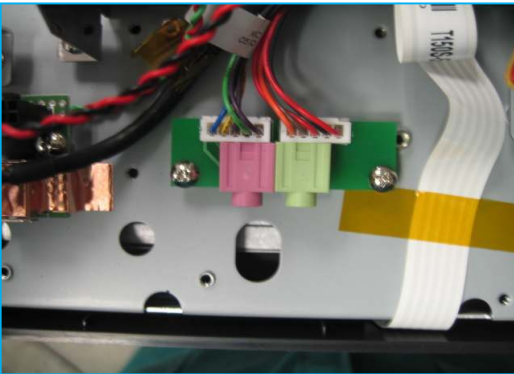
*For POS945(Atom) and GM45 board*



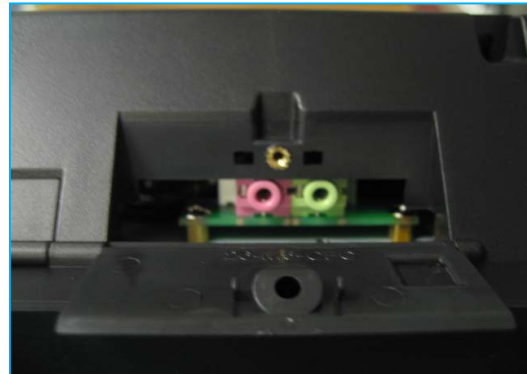
1. Install Mic&Headphone cable to CN10.  
See circle



2. Install two copper holder.  
See circles



3. Install the Mic&Headphone board to the copper holder.



4. Check and make sure the Mic&Headphone board is align with the housing. Finally close the backhousing and re-install all parts.